

Weekly newsletter



The Lea Primary School and Nursery

Headteacher: Tracey Berry

Moorland Road
Harpenden
Hertfordshire
AL5 4LE

Tel: 01582 767939

Email: admin@lea-pri.herts.sch.uk

@leaprimary

AUTUMN TERM 2023 No.6

13th October 2023 Page 1

Dear Parents and Carers

Harvest assembly is one of the key markers in every school calendar. It's our opportunity to celebrate and learn about where our food comes from. It also seems to have marked the end of the summer weather and the beginning of autumn, this week too. I've noticed that I'm leaving school in the dark again and there is a growing number of coats in our cloakrooms.

Our Harvest assembly was a delight. There has been some staff illness over the last couple of weeks so I was very impressed by how quickly the children have been able to learn their lines, learn the songs, knew when to speak and enjoyed themselves. It was also lovely to see so many parents enjoying the performance too.

During the assembly Tony, from the Harpenden Food Bank, explained their growing role within our town and the support that they are able to offer families because of the donations they receive. As always, you have all been very generous and we had substantial pile of food and hygiene products to pass on to them today.

Year 5 had an amazing trip to the Science Museum yesterday, travelling on trains and the underground added to the excitement. They thoroughly enjoyed the space gallery and exploring the Wonderlab. A big thank you to all the staff who enabled the trip and to the children for their impeccable behaviour.

Tracey Berry
Head Teacher

ANNOUNCEMENTS, NOTIFICATIONS AND SCHOOL EVENTS

O2 Rehearsals Information

Next week, we have our after school rehearsal for the O2 on Tuesday, 17th October finishing at 4.15pm. I'm looking forward to being able to go through the whole repertoire including the BSL and dance moves. We don't have enough time or space to do this during the lunchtime rehearsals.

We also have after school rehearsals on Monday, 30th October and Tuesday, 28th November. We would hope that you're able to prioritise these 3 rehearsals, however, please do let me know if your child is not able to attend. These rehearsals normally take priority over other after school clubs at The Lea as there are only 3 of them.

Just a reminder that the children need to be learning the songs at home and you can access the music on Spotify Young Voices UK Music Pack 2024. You can also access all the lyrics, soundtracks and videos on <https://yvmusicroom.com/parentRegisterReferral?code=NDY5LzE2OTQ2OTI3Mzc%3D>. Most children have not yet accessed this at home. They need to learn the dance moves as well as the songs, so they will need to access the music room to do this.

If any parents would like to go, and didn't order their tickets by the September deadline, please can you let us know by next Wednesday, 18th October. This will be the last chance to order through the school. Please note you might not be seated with the other parents from The Lea.

If you have any questions, please come and see me or email me on year4@lea-pri.herts.sch.uk.

Mrs Hills

DATES FOR THE DIARY

October 2023

Fri 13, 3-4pm	Y5/6 Girls Football v Sauncey
Wed 18	International Day
Wed 18, 3:40-7pm	Parents evening
Thu 19	International Day
Thu 19, 3:40-7pm	Parents evening
Fri 20	PTA Non-Uniform Day
Mon 23 - Fri 27	Half Term
Mon 23 - Fri 27	PTA Challenge 2023

November 2023

Wed 1, 9:10-10:15am	Reception Open Morning
Thu 2, 12:30-3:30pm	Y5/6 Basketball
Wed 8	Individual photos
Thu 9, 9:10-10:15am	Reception Open Morning
Thu 9, 9:30-1pm	Y5/6 Girls Football
Mon 13, 3-4pm	Y5/6 Netball v St Nicks (H)
Tue 14, 9:10-10:15am	Reception Open Morning
Tue 14, 1:15-3pm	Cross Country
Thu 16, 7-9pm	Governors FGB Meeting
Fri 17	Flu vaccinations: Rec-Y6
Fri 24, 9:10-10:15am	Reception Open Morning
Mon 27, 12:30-3pm	Y4 Singing at Memory Cafe in Harpenden

December 2023

Mon 4, 9:30-10am	Nursery Nativity
Tue 5, 9:30-10am	Reception Nativity
Wed 6	Rotary Carol Concert
Thu 7, 2-3pm	Y1 & Y2 Production
Tue 12, 7-8pm	Y3 & Y4 Christmas Concert
Wed 13	Whole school Xmas lunch
Wed 13	Christmas Jumper Day
Tue 19	Panto
Wed 20	Term Ends (1.15pm)

January 2024

Thu 4	Inset Day
Fri 5	Start of Term
Mon 15, 7-8:30pm	Governors TLC Meeting
Mon 22, 7-8:30pm	Governors Resources Mtg

For a longer term view of key dates please visit our school website at <https://lea-pri.herts.sch.uk/news-dates/calendar>

LETTERS SENT HOME THIS WEEK

Bell ringers for parent consultations - Year 6
Harvest assembly - whole school
International storytelling - selected parents

WEEKLY ATTENDANCE

Our attendance target is 97%.
Total attendance for last week was 97%.

Our Class Word of the Week

Talk to your child about this word and what it means. Try to use it in everyday conversation at home.

Nursery
similar

Reception
life cycle

Year 1
greater

Year 2
benefits

Year 3
compartment

Year 4
significantly

Year 5
retorted

Year 6
conceal

W, O, R, D, s of the W, E, E, K, s

SCHOOL HOLIDAY CLUB

TLC Holiday Club at The Lea: 23-27 October

Noah's Art have introduced a holiday club which will be run at The Lea during the October Half term.

See flyer at the end of this newsletter for more information.

Bookings can be made via Arbor.

SPORTS REPORTS

Tag Rugby

On Tuesday afternoon a group of Year 6's went to Harpenden Rugby club to compete in the Tag Rugby Festival hosted by Saracens.

It was a great afternoon of Tag Rugby with the team improving their tagging, passing and running with the ball in every game.

We played ten games, winning 5, drawing 2 and losing 3. The team demonstrated some fantastic passages of Tag rugby play and represented the school really well on and of the pitch. Well done!



#GoTeamLea

DONATIONS

Donations

Donations to our school can be made via the [online KindLink page](#). These can be a one off payment or monthly donations. All are welcome and gratefully received.



AWARDS



Team Points

Ruby was the winning team this week. 44 children were awarded their bronze certificate for 25 team points and 1 child received their silver certificates for 50 team points. Well done!



The Lea Superstars

Nursery

Teddy

For settling into Nursery and always smiling.

Finley

For enthusiastic learning and great concentration in everything that he does!

Reception

Annika

For helping a friend with their learning.

Riley

For trying hard in his learning.

Year 1

Florence

For excellent understanding of senses in science.

Archie

For learning all his digraphs in phonics.

Year 2

Elena

For using interesting vocabulary in her retelling of the three little pigs.

Whole Class

For a brilliant effort in their class assembly.

Year 3

Callum & Esmee

For persevering in maths and showing a good growth mindset.

Year 4

Asia

For having a great work ethic and being a good role model for others.

Year 5

Whole Class

For representing the school so well on our trip to Science Museum, London.

Kayla

For well thought out contribution to Black History Assembly discussion

Year 6

Poppy & Felicity

For showing a great growth mindset with their arithmetic skills.

Sports

Connor Le'Ake

For a positive, encouraging, attitude on and off the pitch at the Tag Rugby Festival.

PTA

A little reminder of our **challenge 2023 fundraiser**, we hope you've got some great ideas of how to get involved. If you need a sponsor form these can be found in class, as Mrs Fawkes has very kindly said she will print some off.

Introducing... **Your School Lottery**

Support your PTA by playing a weekly lottery. Play the School Lottery for £1 per ticket. The PTA receive a 40p donation per ticket purchased. 1 guaranteed winner per school every week!

Plus a national winner of £25,000 EVERY WEEK!

For more information click the link below, or message a PTA member today. <https://www.yourschoollottery.co.uk/lottery/school/the-lea-primary-school-and-nursery>

Non-Uniform Day - Friday, 20 October

We have organised a wear your own clothes day on October 20th, please see poster for more info.

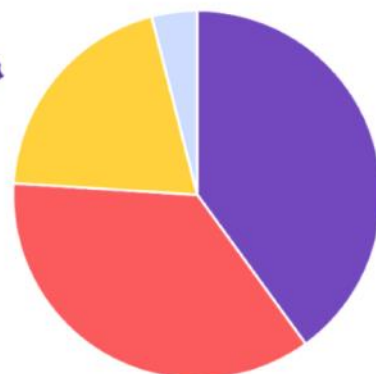
**How it works...**

It's simple—choose 6 numbers between 0-9 and if they match the weekly lottery draw, you win great prizes. One of our players will win a cash prize every week, maybe even the £25k jackpot! Tickets cost just £1 per week and the proceeds are donated to The Lea Primary School & Nursery

Every Saturday at 8pm the numbers are drawn and posted online. Winners are notified by email and winnings paid into the account of your choice.

The easiest way to join our lottery is online by direct debit or debit card.

It's so easy to join and will make a real difference to The Lea Primary School & Nursery



- 40p goes to our school
- 36p goes to cash prizes
- 20p goes to admin costs
- 4p goes to VAT

The Maths... 100 tickets sold a week means

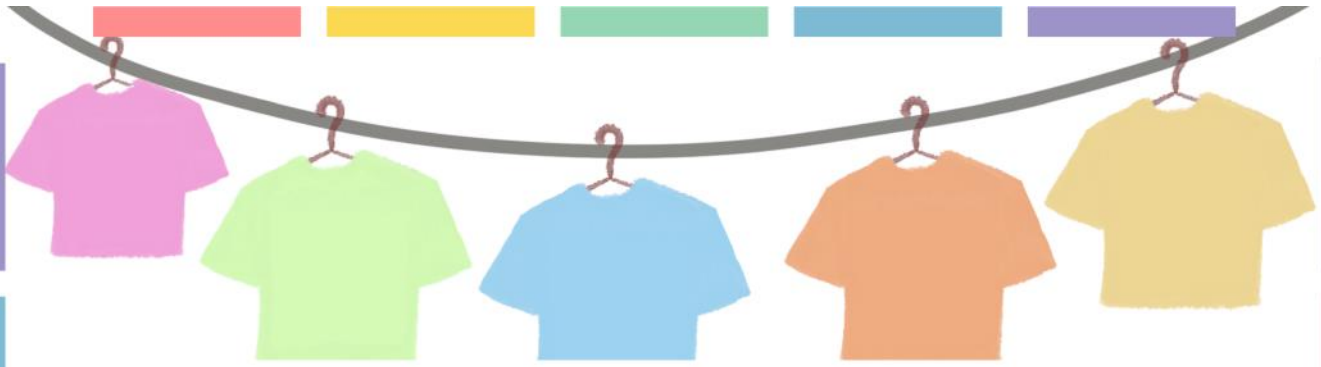
- = £30 weekly cash prize
- = £2,080 a year for our school



Buy A Ticket

GambleAware





On Friday 20th October
the PTA invite you to wear your
Own clothes!
in exchange for a donation



**Please donate with cash at the school gates at drop off
or pick up or go online at :**



pta-events.co.uk/thelea

Thank you for your support!

23/10/23-27/10/23

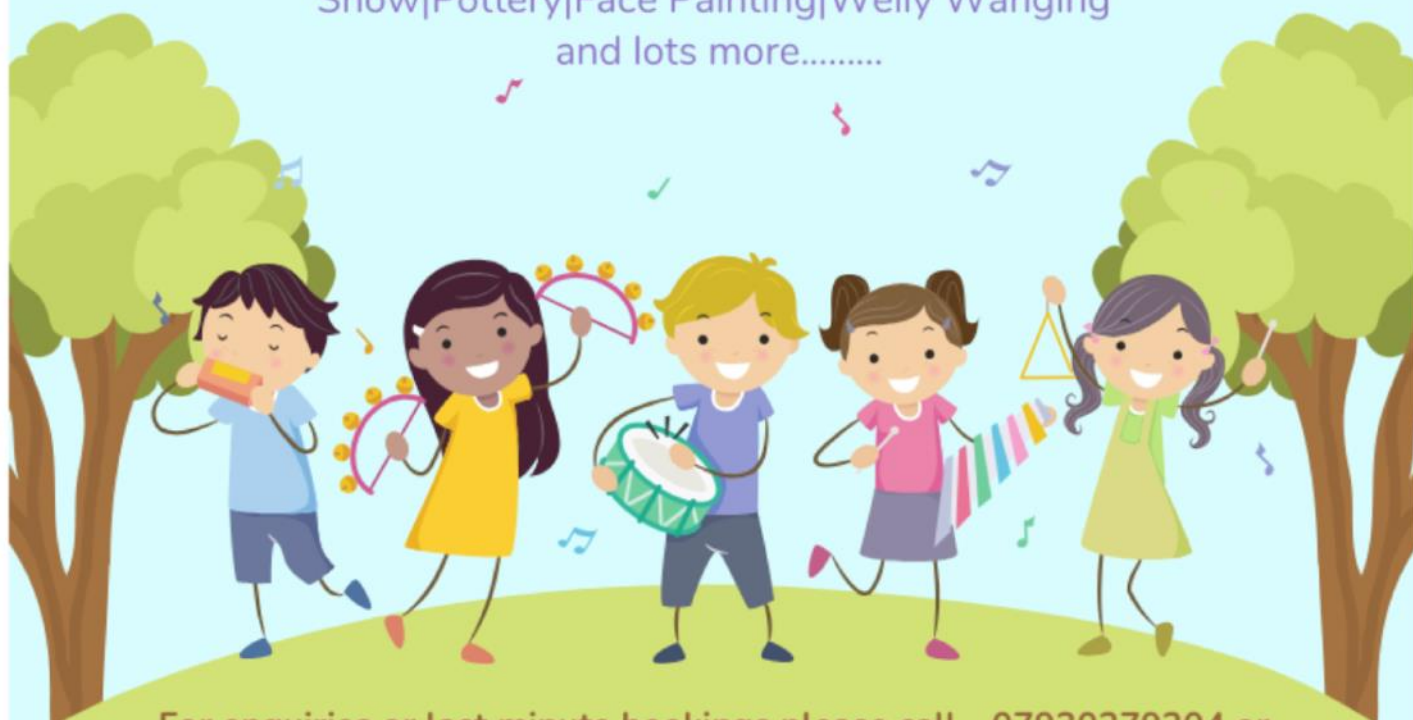
FUN & CREATIVE ACTIVITIES

... TLC ... **Holiday Club**

For children from Nursery to Year 6
@
The Lea Primary School
and
Nursery

**We have lots of exciting activities planned
for the children, including:**

Sports|Art & Crafts|Halloween Themed Activities|Talent
Show|Pottery|Face Painting|Welly Wanging
and lots more.....




**For enquiries or last minute bookings please call - 07930279204 or
email info@noahsarkthelea.co.uk**



Two daily sessions to choose from:

8.30am - 5.30pm
£38 per day


9am - 3.30pm
£30 per day



Children will need to bring a packed lunch, snacks (nut-free) and a water bottle each day

Bookings are now available and can be made via Arbor

Childcare vouchers are accepted



For children from Nursery to Year 6

Payment will need to be made at the time of booking

Seven days notice will be required for cancellations



Entry deadline:

FRIDAY 3RD
NOVEMBER
2023

**BIM
AFOLAMI MP'S**

Christmas card competition

**Bim Afolami MP wants you to
design his official Hitchin &
Harpenden Christmas Card.***

**To enter, please send your design to:
PO Box 1241, Harpenden, AL1 9JF**

(You must include your full name, address and/or school clearly marked.
Please also include an email address for your school, parent or carer.)

For more details email:
bim.afolami.mp@parliament.uk

*Entries must be A4 and coloured in pencil, pen or paint (no glitter). Entrants must live in or attend school in the Hitchin & Harpenden constituency and be of Primary School age. Only one entry per child. The winning design will be printed and sent across Hitchin & Harpenden by Bim and will include the winner's name and school printed on the design.